



**TS-201705
Oneida County**

SALE NAME: Sugar Camp Hwds

THIS IS A Ticket SALE for Pulp-Logs Lump Sum

SALE LOCATION

Oneida County, Township of: Sugar Camp
Section: 8,17 Town: 38N Range: 10E
Sale Size: 190 Acres

CONTRACT PERIOD: 3 Years

Contacts: John Schwarzmann, 715-277-3366 (o)
715-892-0662 (c)
Keb Guralski, 715-277-3366 (o)



Timber sold under this contract is certified. FSC® 100%:

Legal Descriptions

<u>Town and Range</u>	<u>Section</u>	<u>Quarter-Quarters</u>
T38N-R10E	8	SE1/4, SWNE
T38N-R10E	17	NWNE, SWNE

Cutting Requirements

- 1) Cut all trees marked in orange paint.
- 2) Do not cut any trees marked in teal paint.
- 3) In the mark-to-leave areas, cut all red and sugar maple, ironwood, white birch, aspen, fir and spruce with one or more sticks.
- 4) Cutting lines are marked with blue property boundaries, red cutting lines or swamp edges.
- 5) Logging will be allowed from July 15 to October 15 and from Dec. 1 to March 15th under frozen conditions. Logging may extend past Oct. 15th in very dry conditions.

Timber Volume Estimates & Minimum Bid Values

<u>Pulpwood(Cords)</u>	<u>Estimated Volume</u>	<u>Minimum Bid</u>
Aspen	400 Cords	\$35.00/Cord
Balsam fir	120 Cords	\$10.00/Cord
Hardwood	1320 Cords	\$30.00/Cord
Red Pine	12 Cords	\$35.00/Cord
White Spruce	190 Cords	\$35.00/Cord
<u>Sawtimber(MBF)</u>	<u>Estimated Volume</u>	<u>Minimum Bid</u>
Basswood	4 MBF	\$170.00/MBF
Misc. Hwd	3 MBF	\$150.00/MBF
Sugar Maple	8 MBF	\$350.00/MBF

ADVERTISED VALUE / MINIMUM ACCEPTABLE BID: \$65,800 Volume per acre: 10.9 Cords/acre

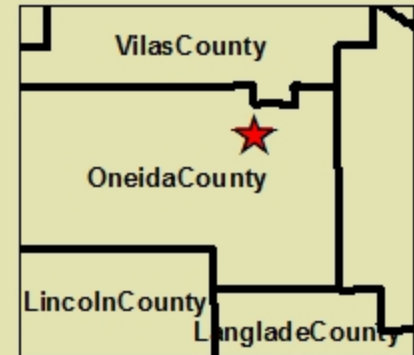
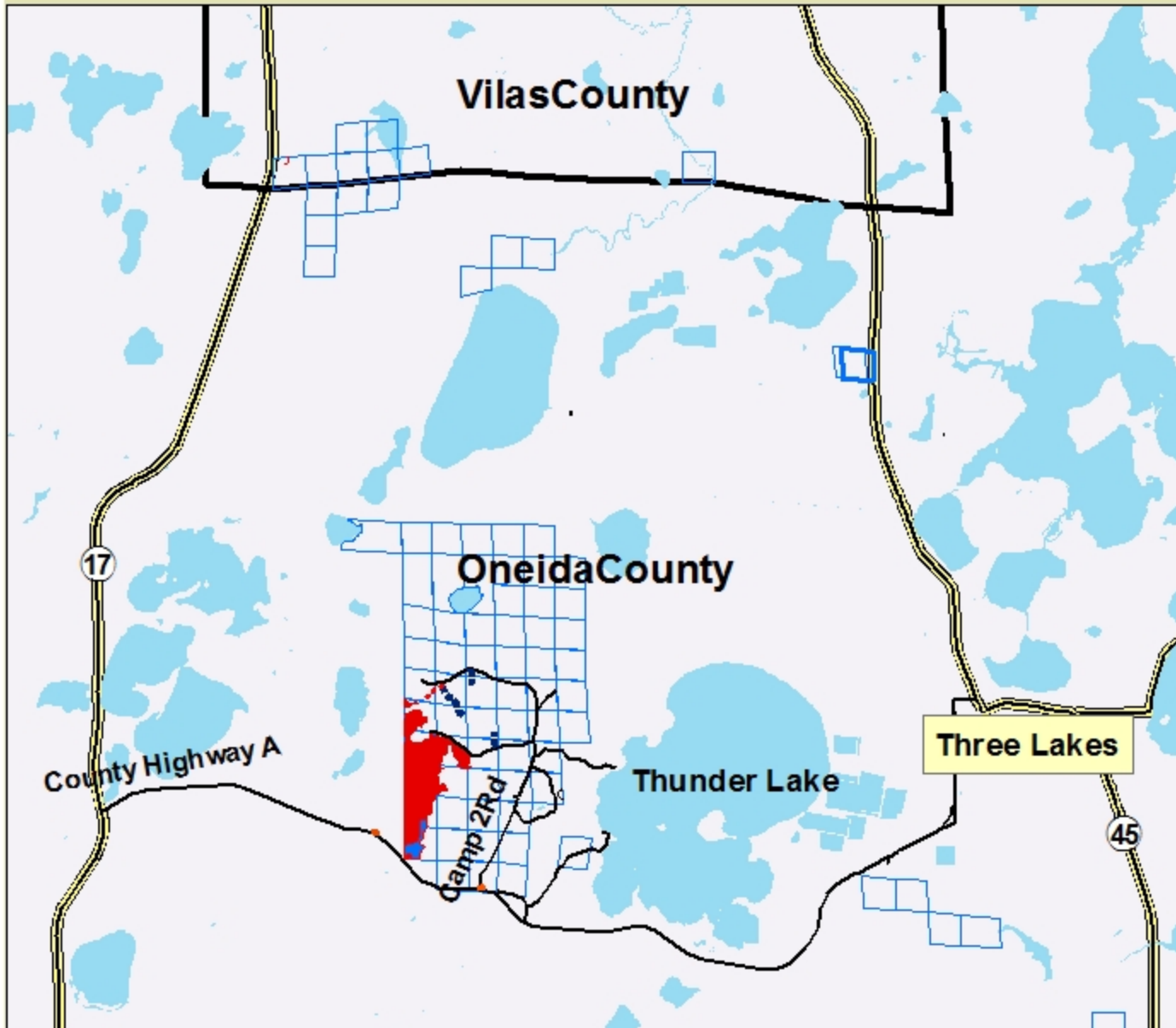
SALE OBJECTIVES: Since there are few crop trees, the harvest objective is to create numerous gaps to create light conditions adequate for maple regeneration.

Access & Terrain- Direct woods road access from County Hwy A. An extensive woods road network ensures short skidding distances. Terrain is flat or rolling hills with few rocks.

OTHER SALE REQUIREMENTS AND CONDITIONS:

- The BCPL can restrict the type of equipment used on the job if conditions or damage warrant.
- Weight/volume conversion factors are listed in the general timber sales conditions and are identical to those listed as in the Wisconsin DNR Timber Sale Handbook
- BMP's (see Field Manual PUB-FR-093-2010) are mandatory for this sale.
- Notify the BCPL (715-277-3366) before you start the job.
- A snowmobile trail runs down the roads in Section 8. Be sure to post the job with proper signage.

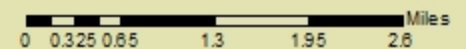
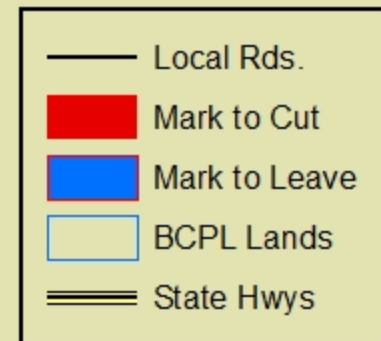
**TS-201705 - Oneida County -Sugar Camp Hwds Timber Sale
 Locator Map**



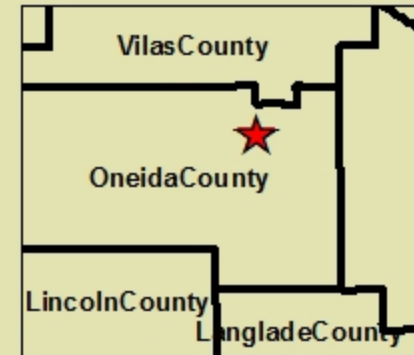
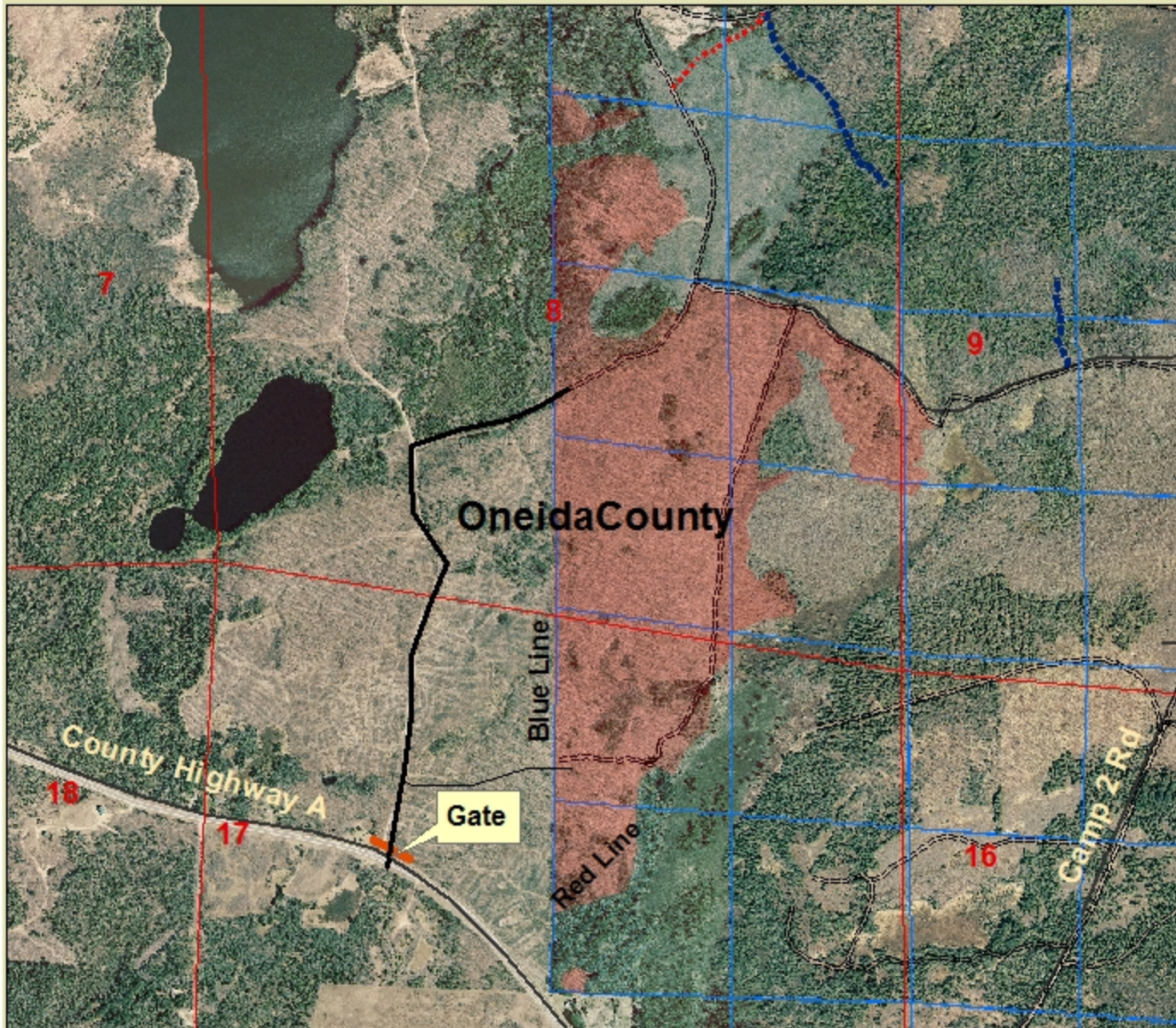
Scale 1:75,000

**Township: Sugar Camp
 Cutting Area:: 190 Acres**

Legend



TS-201705 - Oneida County -Sugar Camp Hwds Timber Sale
T38N-R10E - Section 8, SE 1/4, SWNE
Section 17, NWNE, SWNE



Scale 1:15,000
Township: Sugar Camp
Cutting Area:: 190 Acres

Legend

