



Managing Wisconsin's trust assets for public education.

**TS-201701
Ashland County**

SALE NAME: Hwy 77

THIS IS A Ticket SALE for Pulp-Logs Lump Sum

SALE LOCATION

Ashland County, Township of: Gordon, Shanagolden
Section: 4,5 Town: 42N Range: 3W
Section 36 Town 43N Range 4W
Sale Size: 100 Acres

CONTRACT PERIOD: 3 Years

**Contacts: John Schwarzmann, 715-277-3366 (o)
715-892-0662 (c)
Keb Guralski, 715-277-3366 (o)**



Timber sold under this contract is certified. FSC® 100%:

Legal Descriptions

<u>Town and Range</u>	<u>Section</u>	<u>Quarter-Quarters</u>
T42N-R3W	4 -5	NWNW – NESE, SENE
T43N-R4W	36	SESW

Cutting Requirements

- 1) Cut all trees marked with orange paint.
- 2) Do not cut or run over any trees marked in teal paint.
- 3) Cutting in winter between Dec. 1 and April 1.

Timber Volume Estimates & Minimum Bid Values

<u>Pulpwood(Cords)</u>	<u>Estimated Volume</u>	<u>Minimum Bid</u>
Hardwood	600 Cords	\$30.00/Cord
Aspen	20 Cords	\$30.00/Cord
Balsam fir	10 Cords	\$10.00/Cord
<u>Sawtimber(MBF)</u>	<u>Estimated Volume</u>	<u>Minimum Bid</u>
Misc. Hwd.	1.5 MBF	\$170.00/MBF
Red Maple	2 MBF	\$170.00/MBF
Sugar maple	13 MBF	\$350.00/MBF
White Ash	2 MBF	\$170.00/MBF
Yellow birch	1.5 MBF	\$250.00/MBF

ADVERTISED VALUE / MINIMUM ACCEPTABLE BID: \$24,530 Volume per Acre: 6.8 Cords/acre

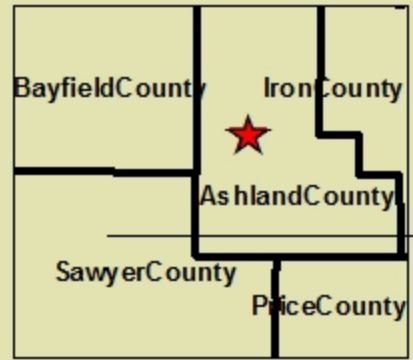
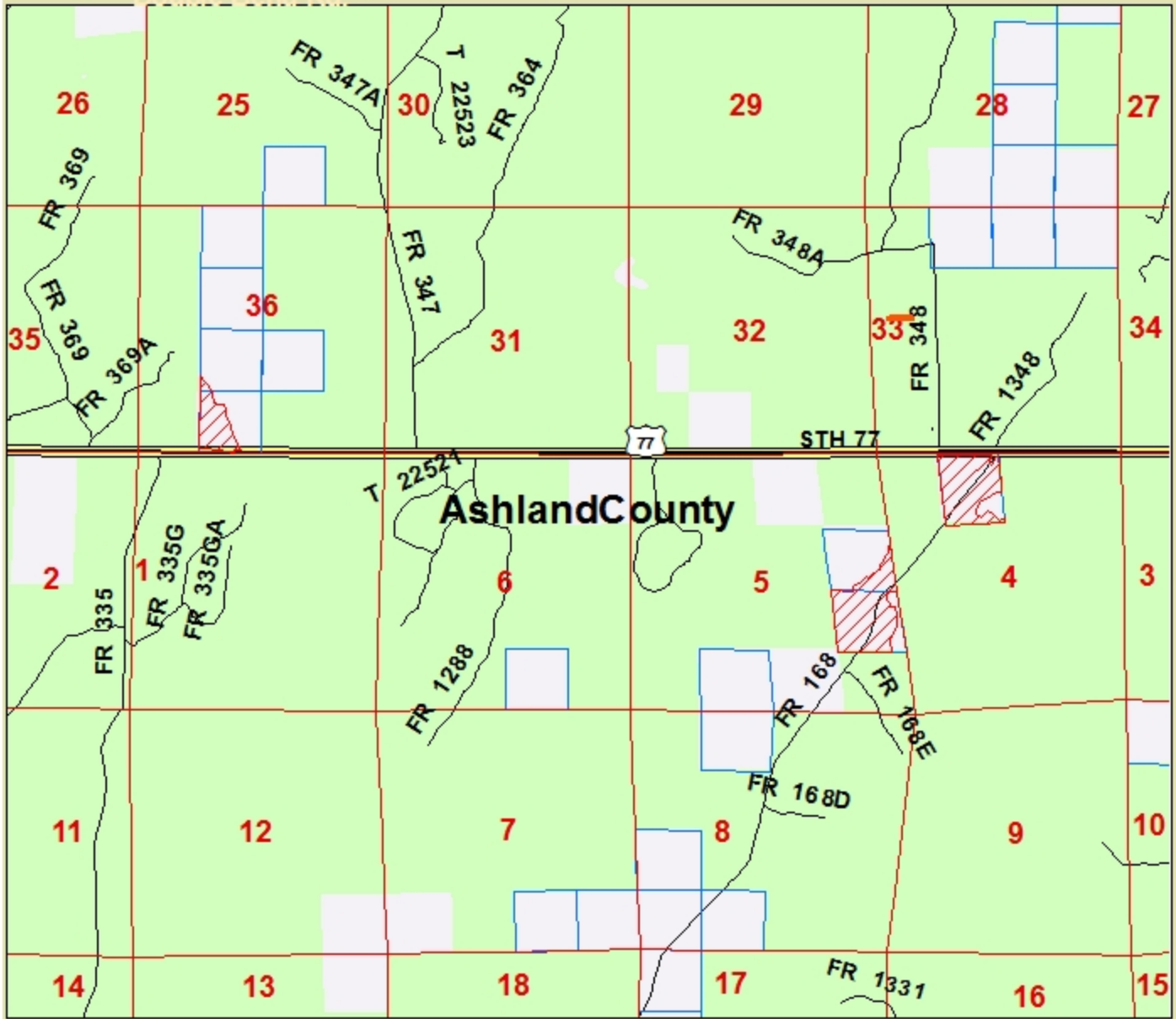
SALE OBJECTIVES: The harvest objective is to release good quality crop trees and form a multi-aged stand of high-quality hardwood timber by carefully managing existing crop trees. Single-tree selection is used to release crop trees and existing pockets of good regeneration, which have converted in the past to berry bushes. Marking removed suppressed, poor- quality trees, prime veneer and good quality maples between 22-25 inches DBH.

Access & Terrain- Direct town road access from USFS Rd. #168 and from Hwy 77. Unrutted woods roads bisect the properties ensuring short skidding distances. Terrain is mostly flat or rolling hills with large areas of wet, rocky soils.

OTHER SALE REQUIREMENTS AND CONDITIONS:

- The BCPL can restrict the type of equipment used on the job if conditions or damage warrant.
- Weight/volume conversion factors are listed in the general timber sales conditions and are identical to those listed as in the Wisconsin DNR Timber Sale Handbook
- BMP's (see Field Manual PUB-FR-093-2010) are mandatory for this sale.
- Notify the BCPL (715-277-3366) before you start the job.
- Check the contract for other requirements.

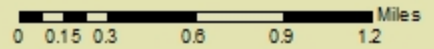
TS-201701 - Ashland County - Hwy 77 Timber Sale Locator Map



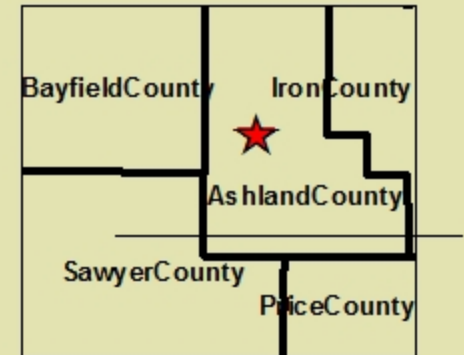
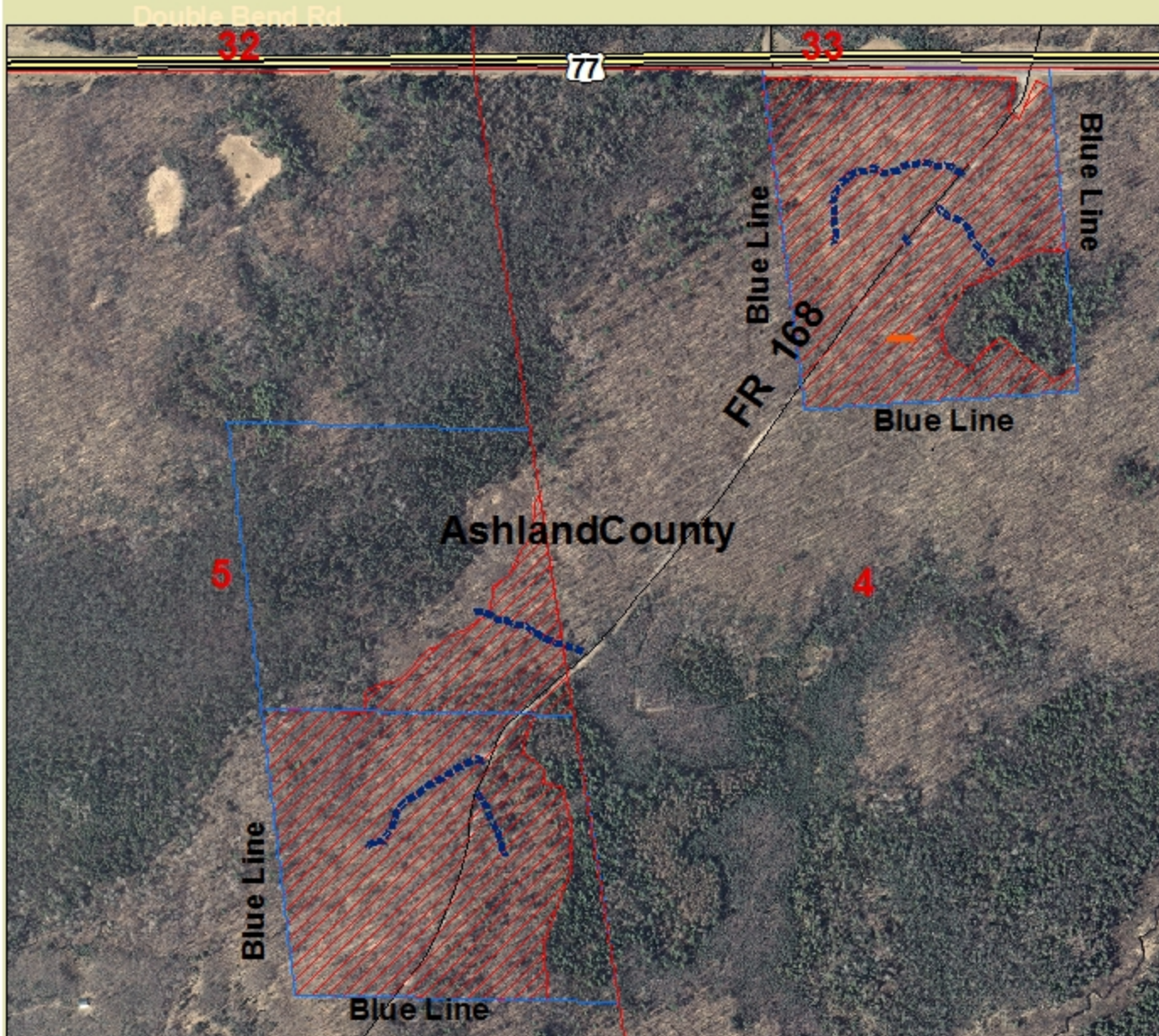
Scale 1:40,000
 Township: Gordon -
 Shanagolden
 Acres: 100

Legend

-  TS-201701_Timber Harvest Area
-  Section Lines
-  BCPL Lands
-  Logging Rds
-  USFS Lands



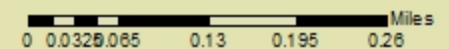
TS-201701 - Ashland County - Hwy 77 Timber Sale
T43N-R4W - Section 36, SESW
T42N-R3W - Section 4, NENW - Section 5, SENE, NESE



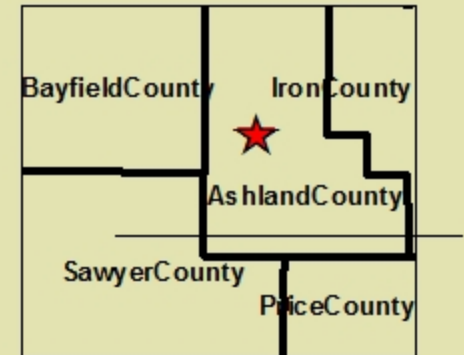
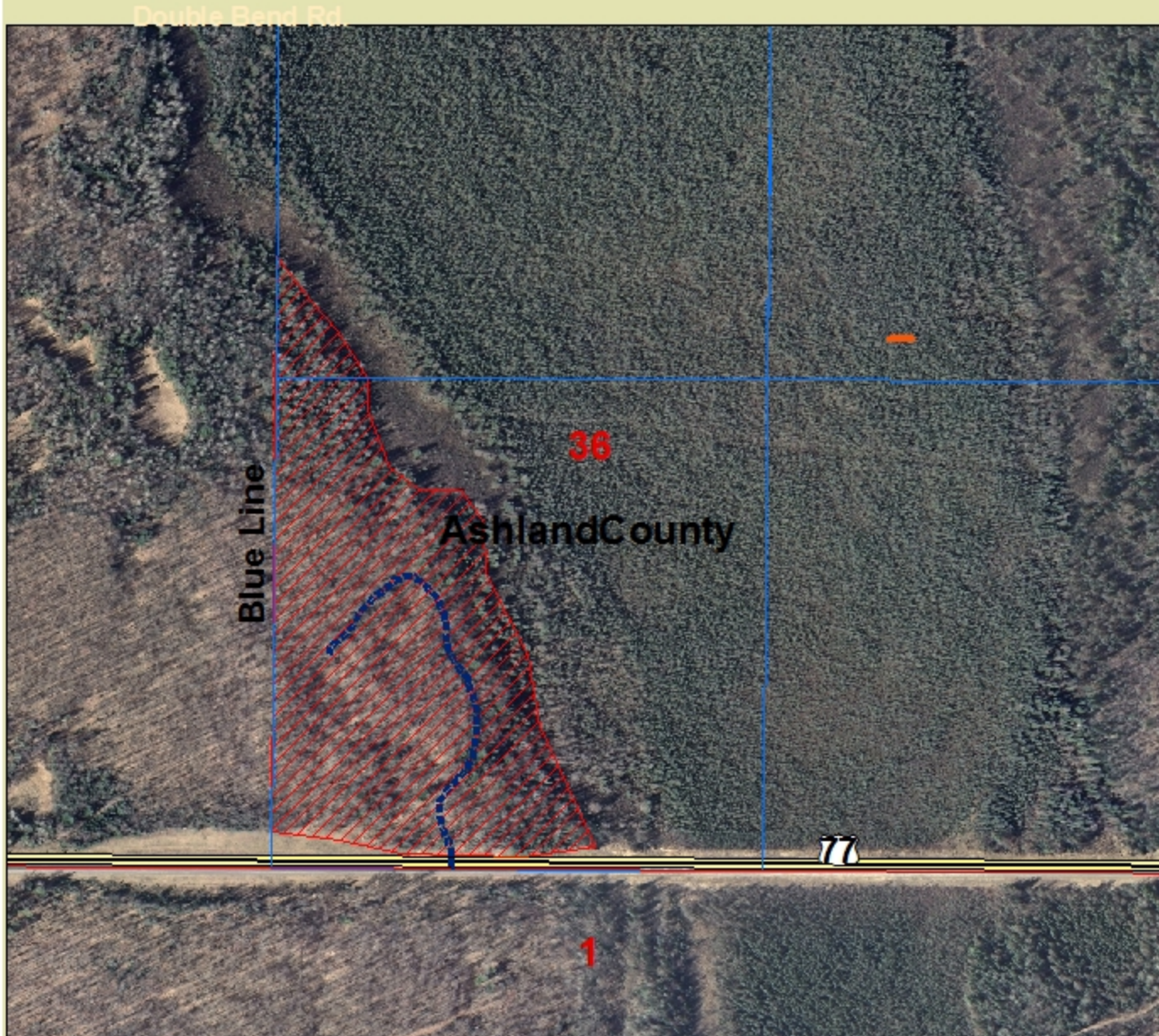
Scale 1:8,000
Township: Gordon -
Shanagolden
Acres: 100

Legend

- - - - Logging Rds-BCPL
- Section Lines
- BCPL Lands
- TS-201701_Timber Harvest Area
- Logging Rds



TS-201701 - Ashland County - Hwy 77 Timber Sale
T43N-R4W - Section 36, SESW
T42N-R3W - Section 4, NENW - Section 5, SENE, NESE



Scale 1:5,000
Township: Gordon -
Shanagolden
Acres: 100

Legend

- Logging Rds-BCPL
- Section Lines
- BCPL Lands
- TS-201701_Timber Harvest Area

